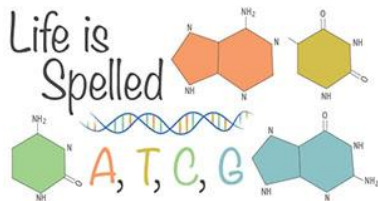


[Across]

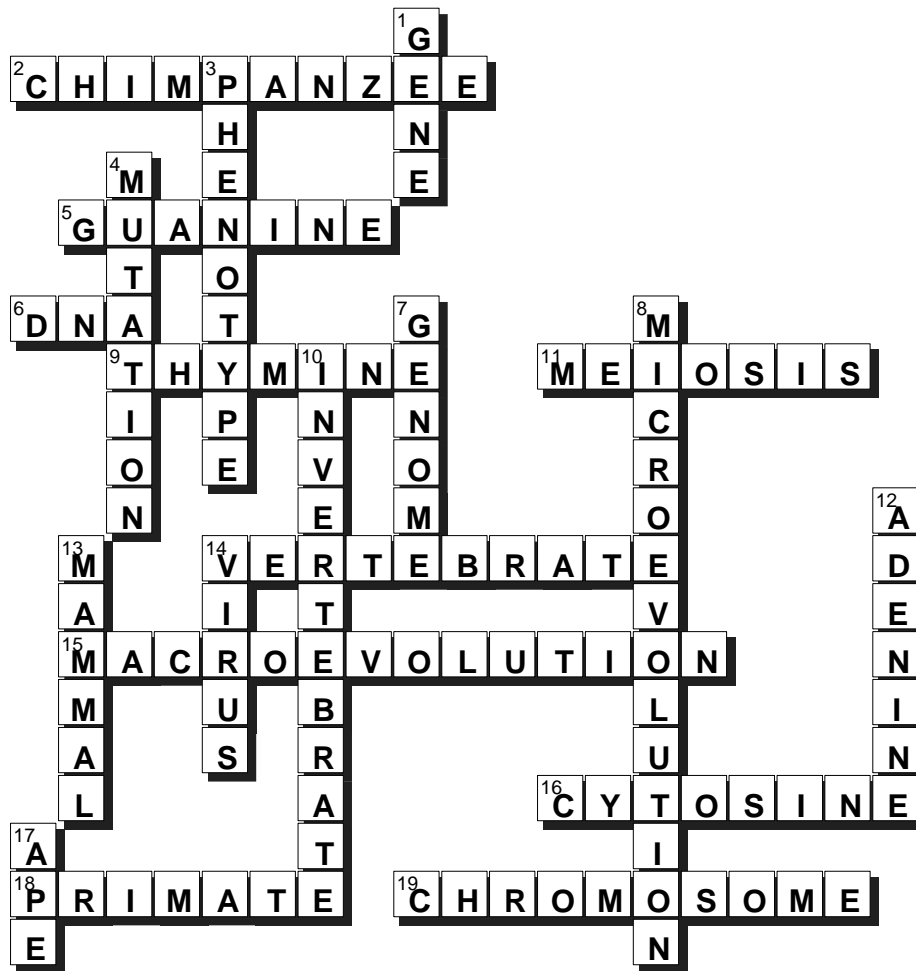
2. The closest living relative to humans
5. Nucleotide abbreviated as G
6. Molecule made of four nucleotides
9. Nucleotide abbreviated as T
11. The process of cell replication undergone by sex cells
14. An animal that has a backbone
15. Change of DNA sequences in a group of organisms over time that leads to speciation
16. Nucleotide abbreviated as C
18. A mammal that has opposable thumbs
19. A long continuous string of DNA

[Down]

1. An independent unit of DNA with a specific instruction
3. The appearance or behavior of an organism
4. A change in a DNA sequence
7. The entire genetic composition of an organism
8. Change of DNA sequences in a group of organisms over time
10. An animal that does not have a backbone
12. Nucleotide abbreviated as A
13. A vertebrate animal that produces milk
14. This contains DNA but is not technically alive
17. A group within primates to which humans belong



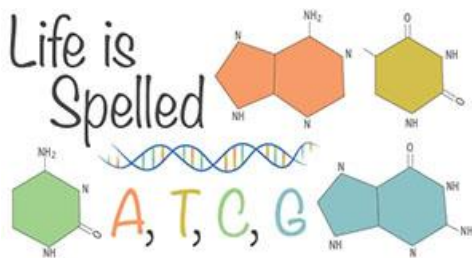
Try our crossword puzzle based on one of our web articles. You can learn more about this topic when you read the article *Life is Spelled A, T, C, G* on the Ask An Anthropologist website. <https://askananthropologist.asu.edu/life-spelled-a-t-c-g>



[Across]

- 2. CHIMPANZEE
- 5. GUANINE
- 6. DNA
- 9. THYMINE
- 11. MEIOSIS
- 14. VERTEBRATE
- 15. MACROEVOLUTION
- 16. CYTOSINE
- 18. PRIMATE
- 19. CHROMOSOME

SOLUTION



[Down]

- 1. GENE
- 3. PHENOTYPE
- 4. MUTATION
- 7. GENOME
- 8. MICROEVOLUTION
- 10. INVERTEBRATE
- 12. ADENINE
- 13. MAMMAL
- 14. VIRUS
- 17. APE

This solution above will let you see how well you did with the puzzle. Try some of the other puzzles at the *Ask An Anthropologist* web site listed below.